

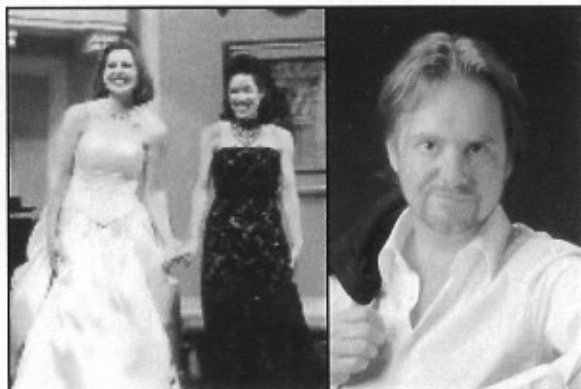
OCTOBER 4, 2009

**JESSE COOK** and band Fiery, passionate and percussive, Jesse blends Moorish rhythms and Gypsy with his own rumba flamenco style. Award winning guitar work combined with his smoldering onstage charisma makes for a fantastic performance.



NOVEMBER 15, 2009

**BELLA SORELLA** and **NYLE WOLFE** A fabulous double program with award winning soprano ensemble that combines popera and contemporary styles in melodic and powerful duets. Add to them Nyle Wolfe, international star, with his luxurious Irish baritone voice and you have true beauty. Whether they are performing together or apart, this is a program to delight you.



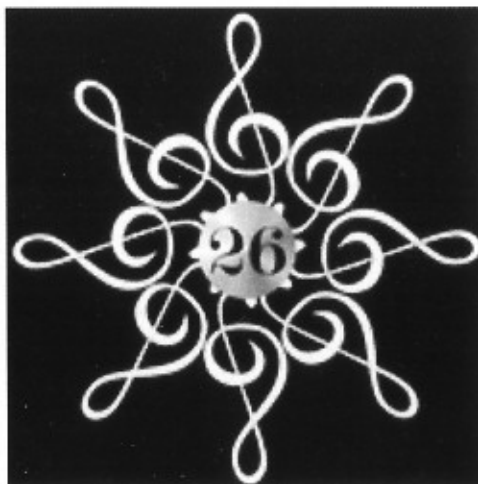
MARCH 14, 2010

**3 LEG TORSO** A quintet that is influenced by Tango, Latin, Klezmer, Eastern European Gypsy, and other traditions. They perform with the precision of chamber music and the enthusiasm of rock and roll, with the authenticity of folk music and the passion of world music. With violin, trumpet, accordion, bass and percussion their music is impassioned and idiosyncratic—a wonderful surprise.



FEBRUARY 21, 2010

**BOYZ NITE OUT** Specializing in original, pop and golden oldies, BNO uses its all-vocal musical abilities—no instruments—with phenomenal results. Their impressive musical ability and style has electrified audiences all over the country.



APRIL 18, 2010

**MIKE STRICKLAND TRIO** As a gifted arranger and stylist, Mike's eclectic concert sets might include jazz, classics, romantic film themes, blues, piano busting boogie-woogie and gorgeous original music. Mike is coming back by popular demand. A vocalist will add texture to the trio.



Visit [www.redmondcca.org](http://www.redmondcca.org) for a direct link to each of these artists

## 2009-2010 SEASON SUBSCRIPTIONS

Adult \$50.00  
Family \$105.00 (families with children at home)  
Student \$20.00 (under 18)

Concert Times: Sundays, 2:00 PM and 6:30 PM.

Renewing subscribers have choice of concert times, based on available seating.

### PATRON PROGRAM

Grand Patron \$1,000  
Patron \$500  
Sponsor \$250  
Contributor \$150  
Friend \$50


Your patron support enables Redmond Community Concert Association to offer artist Outreach Programs in our area schools as well as maintaining affordable subscription prices.

All concerts presented at:  
Redmond High School Auditorium  
(corner of SW Rimrock and Highland)

Doors open 45 minutes prior to show time.  
Dates and programs subject to change

[www.redmondcca.org](http://www.redmondcca.org)  
541-350-7222

REDMOND COMMUNITY CONCERT ASSOCIATION  
PO BOX 91  
REDMOND, OR 97756



REDMOND  
COMMUNITY  
CONCERT  
ASSOCIATION

2009-2010  
SEASON